

RBHR - SERIES A

Horizontal Standard Fan Coil Unit, Concealed with Plenum

Quick Reference Product Catalog

MODEL

- RBHR - SERIES A - Horizontal standard fan coil unit, concealed with plenum

FEATURES

- Galvanized steel construction
- 3/8" elastomeric closed cell foam insulation
- 1 1/2" duct discharge collar
- Four point hanger mounting brackets
- Integral filter rack with 1" throwaway filter w/ Merv 8 and 13 (optional)
- Integral rear ducted return, field reversible to bottom return
- Bottom return (optional)
- Telescoping bottom panels (Optional)

COILS

- Cooling - chilled water (2-6-row)
- Heating - hot water (1 or 2-row), reheat or preheat position
- 6 total rows of cooling and heating coils maximum
- 3/8" O.D. seamless copper tubes (0.012" tube wall thickness)
- 1/2" O.D. seamless copper tubes (0.016" or 0.025 tube wall thickness)
- Stainless steel coil casing (optional)
- High efficiency aluminum fin surface available in 10, 12, 14 FPI
- Left or right hand, same or opposite side connections
- Manual air vents
- Automatic air vents (Optional)

DRAIN PANS

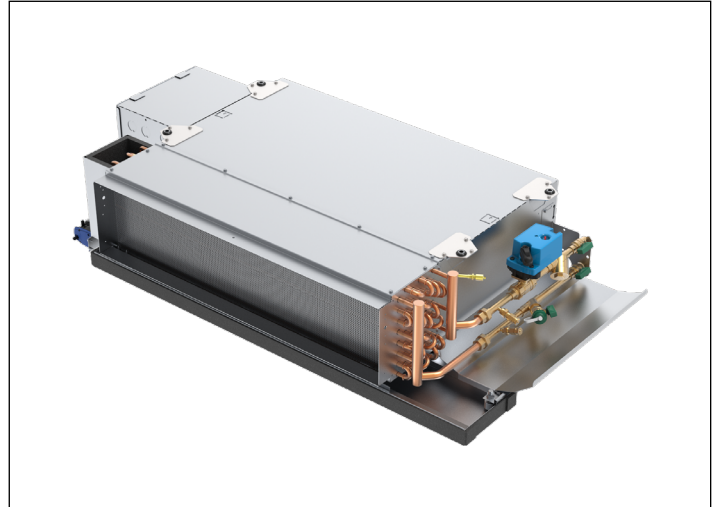
- Single wall, galvanized steel or stainless steel, externally insulated – fire retardant and antimicrobial
- Positively sloped to drain connection
- Condensate pump - single point power, plenum rated, maintenance free and quiet operation 115V, 230V (optional)
- Condensate overflow switch (optional)
- Auxiliary drain pan, galvanized or stainless steel (optional)
- 7/8" O.D. primary drain connection (3/4" MPT for stainless steel pan)
- 5/8" O.D. secondary drain connection (3/8" MPT for stainless steel pan)

FAN/MOTOR ASSEMBLIES

- Forwardly curved, DWDI centrifugal type
- 115 & 277V, 1-phase, 3-speed PSC motors
- 115, 208-230, 220 & 277V, 1-phase EC motors available in 3 speed fixed, 3 speed adjustable and 2-10V motor control
- Quick disconnect motor connections
- Removable fan/motor deck for service

THERMOSTATS

- Remote mounted analog, digital display or programmable, Bacnet or Standalone
- 2 and 4 pipe control sequences
- Automatic and manual changeover



- 24V floating point control
- 0-10V proportional control

ELECTRICAL

- Electrical junction box for field wiring terminations
- Freezestat, dirty filter switch, discharge air temperature sensor (optional)
- Unit and remote mounted 3-speed fan switches (optional)
- Bottom hinged electrical enclosure (optional)
- SCR fan speed controller high speed only (optional)
- Main fusing (optional)
- Disconnect switch, toggle or door interlocking (optional)
- Electric reheat available
- Silent electric heat relays and fan relay (optional)

PIPING PACKAGES

- Factory assembled – shipped loose for field installation
- Unit mounted - shipped from factory with structural supports
- 1/2" and 3/4" piping size
- 2 and 3-way, 2-position or floating point modulating, 0-10V proportional control valves
- Isolation ball valves with memory stop
- Automatic fixed flow control (optional)
- Unions and P/T ports (optional)
- Y strainer with blowdown

CERTIFICATIONS

- cETL Listed Electric Heat Units - Adherence to UL 60335
- AHRI 440 certified performance data

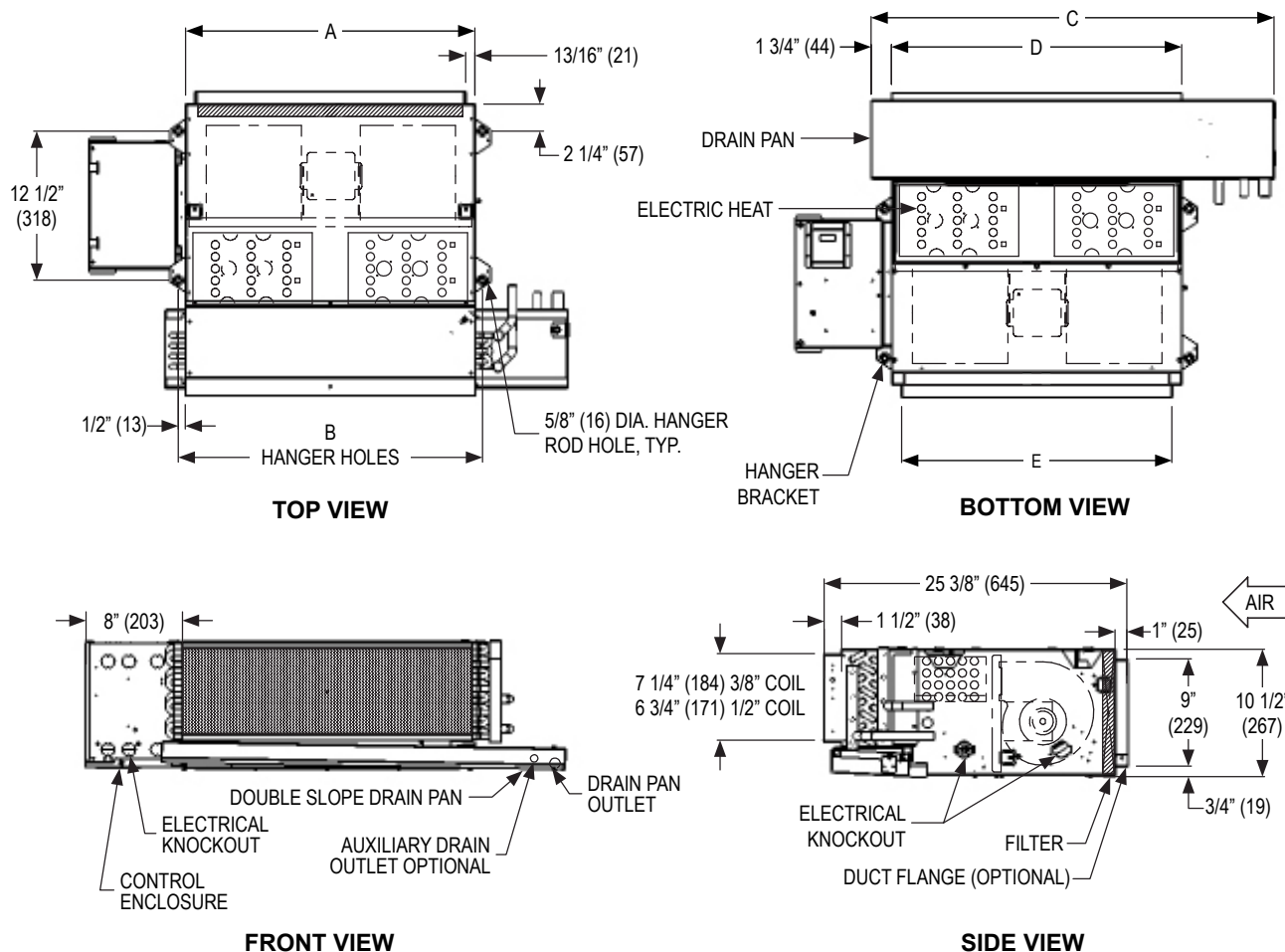
WEB SEARCH: **RBHR**

RBHR - SERIES A

Horizontal Standard Fan Coil Unit, Concealed with Plenum

Quick Reference Product Catalog

DIMENSIONAL DATA



NOTES: Left hand coil shown, right hand is available. Provide access clearance for electrical enclosure per local and national electrical code requirements. Dimensions in parentheses are in millimeters (mm). See table below for dimensional references.

RBHR - SERIES A

Horizontal Standard Fan Coil Unit, Concealed with Plenum

Quick Reference Product Catalog

PERFORMANCE AND DIMENSIONAL DATA

Size	Performance			Dimensions				
Unit	CFM Range	Total Cooling Capacity Range (MBH)	Heating Capacity Range (MBH)	A	B	C	D	E
02	175-270	4 - 7	10 - 19	16" (406)	17 1/4" (438)	25 1/2" (648)	16" (406)	14 3/8" (365)
03	215-325	5 - 8	12 - 22	19 1/4" (489)	20 1/2" (521)	28 3/4" (730)	19 1/4" (489)	17 5/8" (448)
04	280-425	8 - 12	17 - 30	24 1/4" (616)	25 1/2" (648)	33 3/4" (857)	24 1/4" (616)	22 5/8" (575)
06	400-625	9 - 14	20 - 37	31" (787)	32 1/4" (819)	40 1/2" (1029)	31" (787)	29 3/8" (746)
08	410-675	12 - 19	26 - 47	38" (965)	39 1/4" (997)	47 1/2" (1206)	38" (965)	36 3/8" (924)
09	500-800	10 - 20	26 - 49	42 1/4" (1073)	43 1/2" (1105)	51 3/4" (1314)	42 1/4" (1073)	40 5/8" (1032)
10	750-1050	14 - 27	35 - 60	52" (1321)	53 1/4" (1353)	61 1/2" (1562)	52" (1321)	50 3/8" (1280)
12	810-1200	18 - 32	42 - 77	60" (1524)	61 1/4" (1556)	69 1/2" (1765)	60" (1524)	58 3/8" (1483)

NOTES: Information shown is abbreviated. See website for complete information. Data is based on 115/1/60 EC motor with 0.05" ESP. Cooling coil: Fan curves include pressure losses for cabinet, a 3/8" 12 FPI 3 row coil, and a clean 1" throwaway filter. CFM and coil performance ranges will vary depending on coil combination selected.